

USB3-FRM13_K

Base/Medium/Full Configuration Camera-link Frame Grabber Board



INTRODUCTION

The USB3-FRM13_K interworks with the Camera Link Camera, it is a board already transmitting a frame to PC to USB3.0 Super Speed (5Gbps) methods.

GENERAL DESCRIPTION

- ◆ Support Area/Line Scan Camera
- ◆ USB 3.0 Specification Host Interface
- ◆ Supports PoCL (Power over Camera Link)
- ◆ Power by type-B connector for power(5V) or External 12V DC Power
- ◆ Super Speed Device 5Gbps
- ◆ 512MByte DDR3

APPLICATION

- ◆ Black and White, Color Image Display
- ◆ Image Acquisition (Pattern, Particle etc)
- ◆ Inspection Equipment (Sensor, Semiconductor, Device etc)
- ◆ Medical Image Capture (X-ray, Supersonic)

SOFTWARE

■ Operating System

- Windows 2000/XP/7/8/10 (32/64bit)

■ API

- Interface with Application through client DLL

SPECIFICATION

■ Features

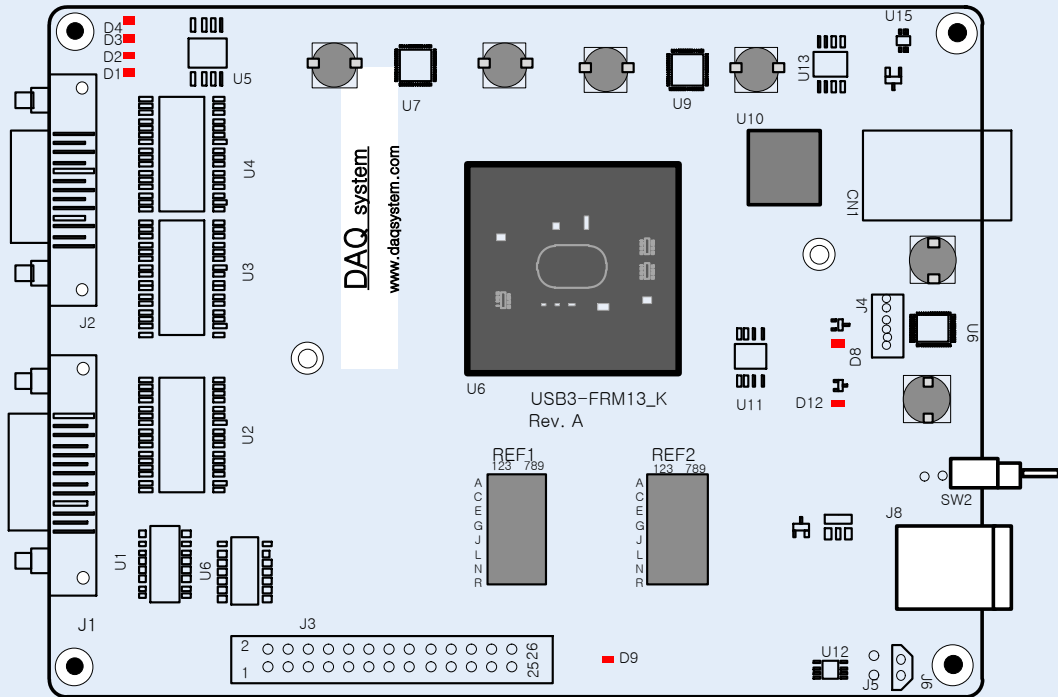
- Supports USB3.0 specification type B Connector
- Super Speed(5Gbps) device
- Pixel Clock : 20 ~ 85MHz
- 1 ~ 10Tap supports 85MHz

■ Functions

- PoCL (Base Connector)
- All of the board functions are controlled by the logic program of the FPGA.
- Support 1-CH Camera Link Base/Medium/ Full Configuration
- A,B,Z phase RS422 signal input
- Line Trigger input
- Line Trigger Output

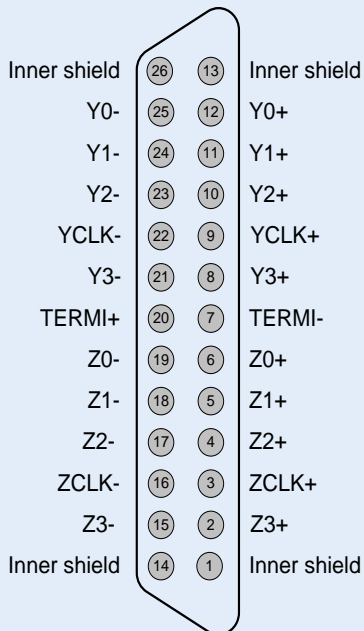
■ Board Feature

USB3-FRM13_K Board



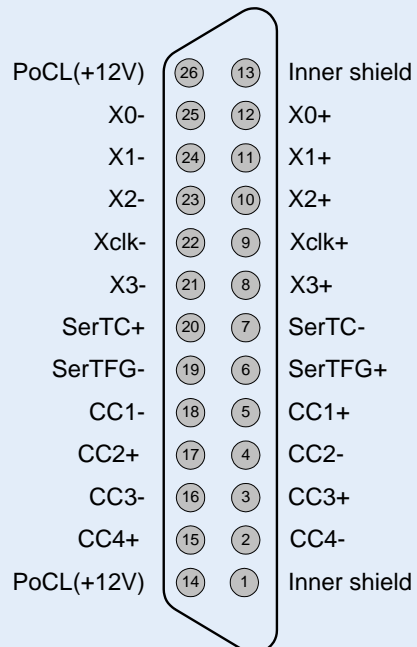
■ Connector Map

Frame Grabber



Medium/Full Camera Link : J4

Frame Grabber



Base Camera Link : J8

PHYSICAL/ENVIRONMENTAL

▣ **From Factor**

- USB3.0

▣ **Dimension**

- Camera Interface : Camera Link
- Dimension (not including connectors) : 110mm x 80 mm

▣ **Temperature**

- 0 to 60°C, Operating
- -20 to 70°C Storage

▣ **Relative Humidity**

- 5 to 95%, Non-considering

▣ **Power Requirement**

- Power Supply through USB(Max. 500mA)
- 12V (Max. 1A)

BLOCK DIAGRAM

