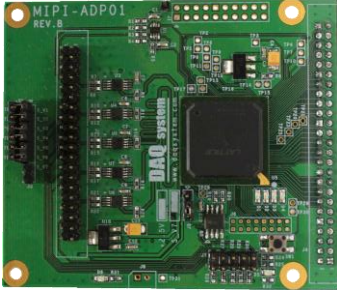


MIPI-ADP01

Serial to parallel Board



INTRODUCTION

The MIPI-ADP01 is a daughter board of USB3-DIO01, it is an MIPI adaptor board that transmitting a frame to USB3-DIO01.

GENERAL DESCRIPTION

- ◆ Serial(MIPI) to Parallel Adaptor Board

APPLICATION

- ◆ USB3-DIO01 Daughter Board

BLOCK DIAGRAM

